



A Soulful Abode
Crossing limits of
Luxury

Meena Lurum

A Gold Class Living

Sulanguri, Near New Town

Created & Developed by **D R A N G E**
DESIGN & ARCHITECTURE



DWARKA VEDMANI
AD-169, Salt Lake City
Sec - I, Kolkata - 700064

4060 2523 | 9836214411 | 9836314411

Website : www.gpsgroup.co.in

Email : sales@gpsgroup.co.in

Disclaimer : This is not legal document. It describes the conceptual plan and intent of the builder. The images and the details mentioned in this document are tentative and subject to change at the discretion of the developer and/ or architects.

FOUNDER'S DESK

Our Company

Founded in 1984 The GPS Group is one of the largest, most innovative, creative and forward thinking real estate Company in Kolkata. The core of our business philosophy is a commitment to extraordinary service, honesty & clear communication.

Our History

We launched as GM Group in 1984 and after 32 years in the industry, we opened its second full-service office as GPS Group in Dwarka Vedmani, AD-169, Salt Lake City, Sec-I, Kolkata-700064, in order to better serve our clients.

Key Personnel

Mr. G.P. Gupta, belongs to a reputed business family, started career in real estate in 1984 and constructed many multistoried residential & commercial building complex over the years. He is the first developer in Kestopur

Mr. Sanjay Gupta, has in excess of 22 years of experience in the engineering and construction industry. He joined as director with responsibility to business development and operations coordination. His experience encompasses all phases of project delivery including project manager, site management, project controls and estimating.

Our Staff

Above all of this-the offices, the technology, our history would be nothing without our people. At the core of every successful real estate transaction they are the key persons who bring it all together. Our team is trained and they bring with them a wealth of experience and knowledge – not just about real estate, but about life in general. Our staffs are passionate about what they do, and they take their jobs seriously.

At the GPS Group, we go the extra mile to make our customers happy. We are not only satisfying our customers, we delight them.

G.P. GUPTA

SANJAY GUPTA

COMPLETED PROJECTS

Shown Few of
Many Projects



Meena Ganga



Meena Green



Meena Residency



Meena Residency(Phase II)



Meena Sangam



Meena Siddhi



Meena Surya



Meena Vatika



Meena View



Meena Wood



Meena Elegant



Meena Garden



Meena Pearl



Meena Florence

CURRENT PROJECTS



Meena Sunrise



Meena Avalon



Meena Graciya



Meena Aurum

COMING PROJECTS



Meena Genesis



Meena Heritage



Meena Ozone




Location Map





Location Advantage




Metro Station : 4 km | Bidhan Nagar Station : 6.5 km




Tata Cancer Hospital : 4 km | Appollo Hospital : 9 km | Amri Hospital : 10.5 km



Vip Bigbazar : 4.5 km | City Centre II : 6.5 km | Mani Square: 9 km | City Centre I : 9.5 km





DPS New town School : 4 km | DPS Megacity School : 5 km | Bharatiya Vidya Bhavan : 9.5 km
Our lady queen of the mission's school :10.5 km



Airport : 7.5 km



Vip Road : 3.5 km



Eco Park : 4.5 km | Aquatica : 5 km | Nicco Park : 6 km

Location Map & Location Advantage

Welcome to the aura of newness
Welcome to bright sunny morning
Welcome to **GOLD CLASS LIVING**



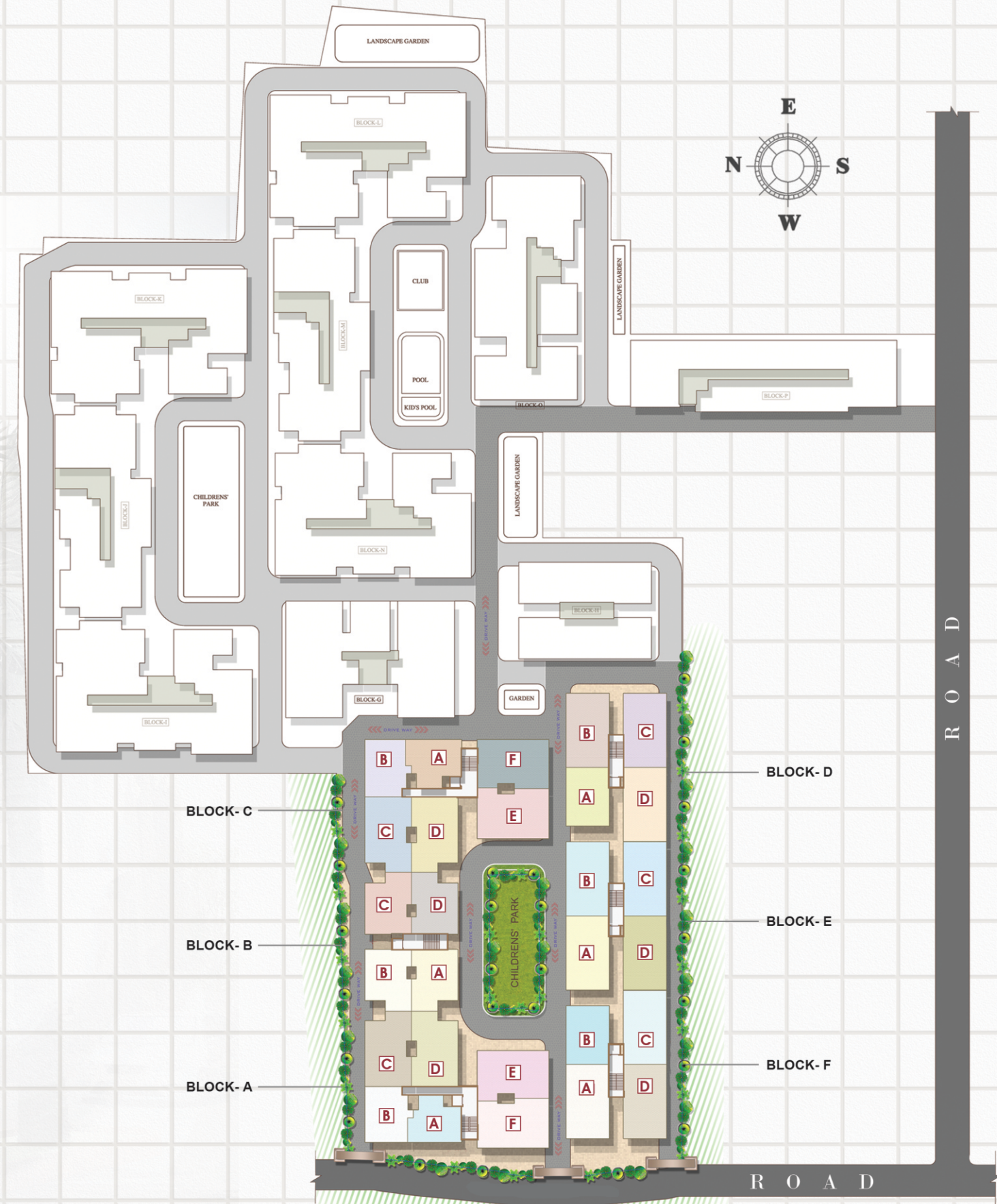
Day View of
Meena Aurum



Night View of
Meena Aurum



Master Plan

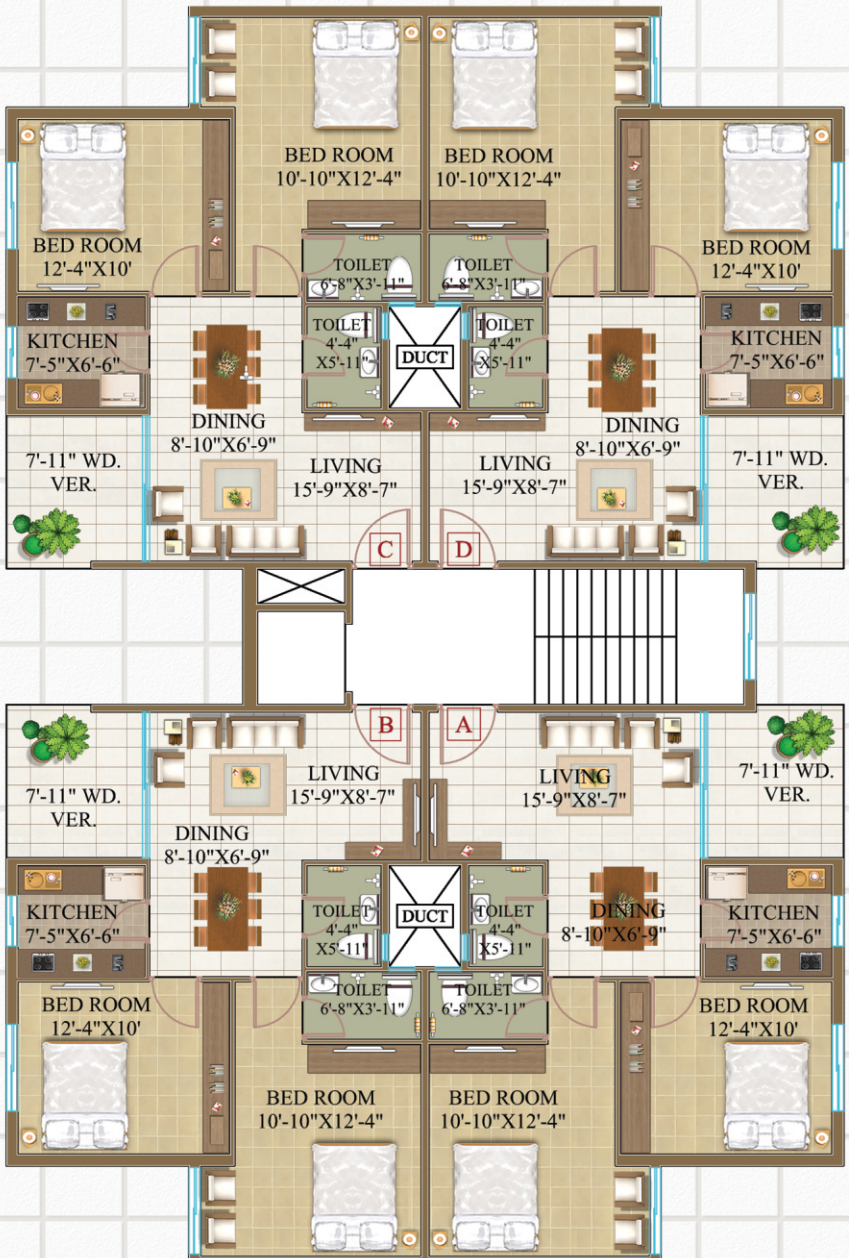
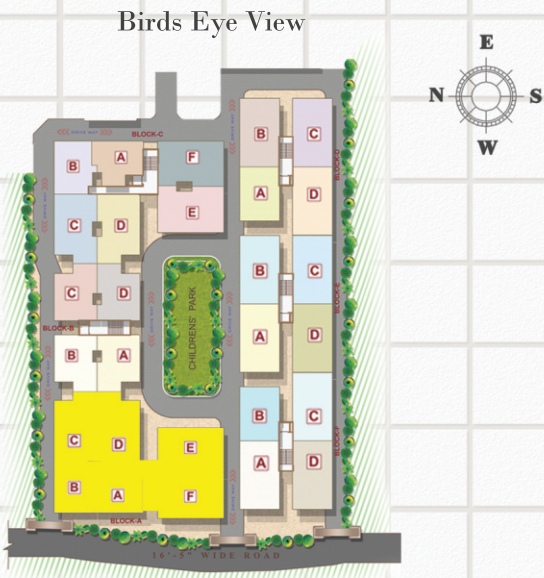




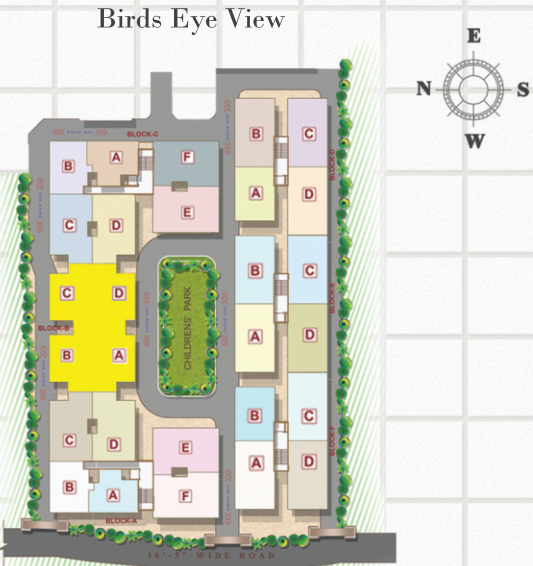
Make your destination home
protected with dreams & many smiles
Decide your FLOOR PLAN

Floor Plan

Flat	Type	Area
A	2 BHK	802 sq. ft
B	2 BHK	889 sq. ft
C	3 BHK	1208 sq. ft
D	3 BHK	1208 sq. ft
E	3 BHK	1273 sq. ft
F	3 BHK	1271 sq. ft



Flat	Type	Area
A	2 BHK	971 sq. ft
B	2 BHK	973 sq. ft
C	2 BHK	975 sq. ft
D	2 BHK	971 sq. ft



Floor Plan

BLOCK - D

Flat	Type	Area
A	2 BHK	927 sq. ft
B	3 BHK	1170 sq. ft
C	3 BHK	1170 sq. ft
D	3 BHK	1174 sq. ft

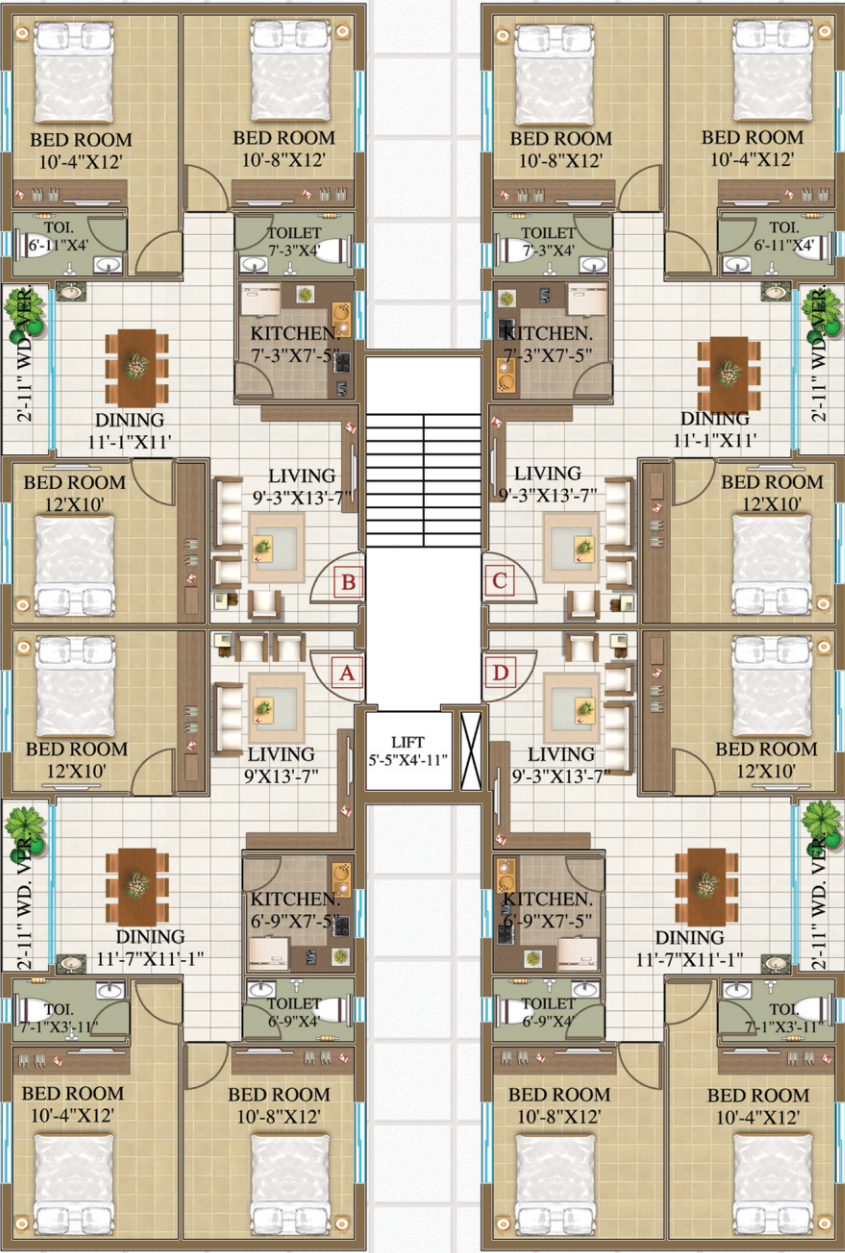
BLOCK - C



Flat	Type	Area
A	2 BHK	861 sq. ft
B	2 BHK	881 sq. ft
C	3 BHK	1208 sq. ft
D	3 BHK	1208 sq. ft
E	3 BHK	1312 sq. ft
F	3 BHK	1270 sq. ft

Floor Plan

BLOCK - E



Flat	Type	Area
A	3 BHK	1167 sq. ft
B	3 BHK	1165 sq. ft
C	3 BHK	1165 sq. ft
D	3 BHK	1168 sq. ft



BLOCK - F

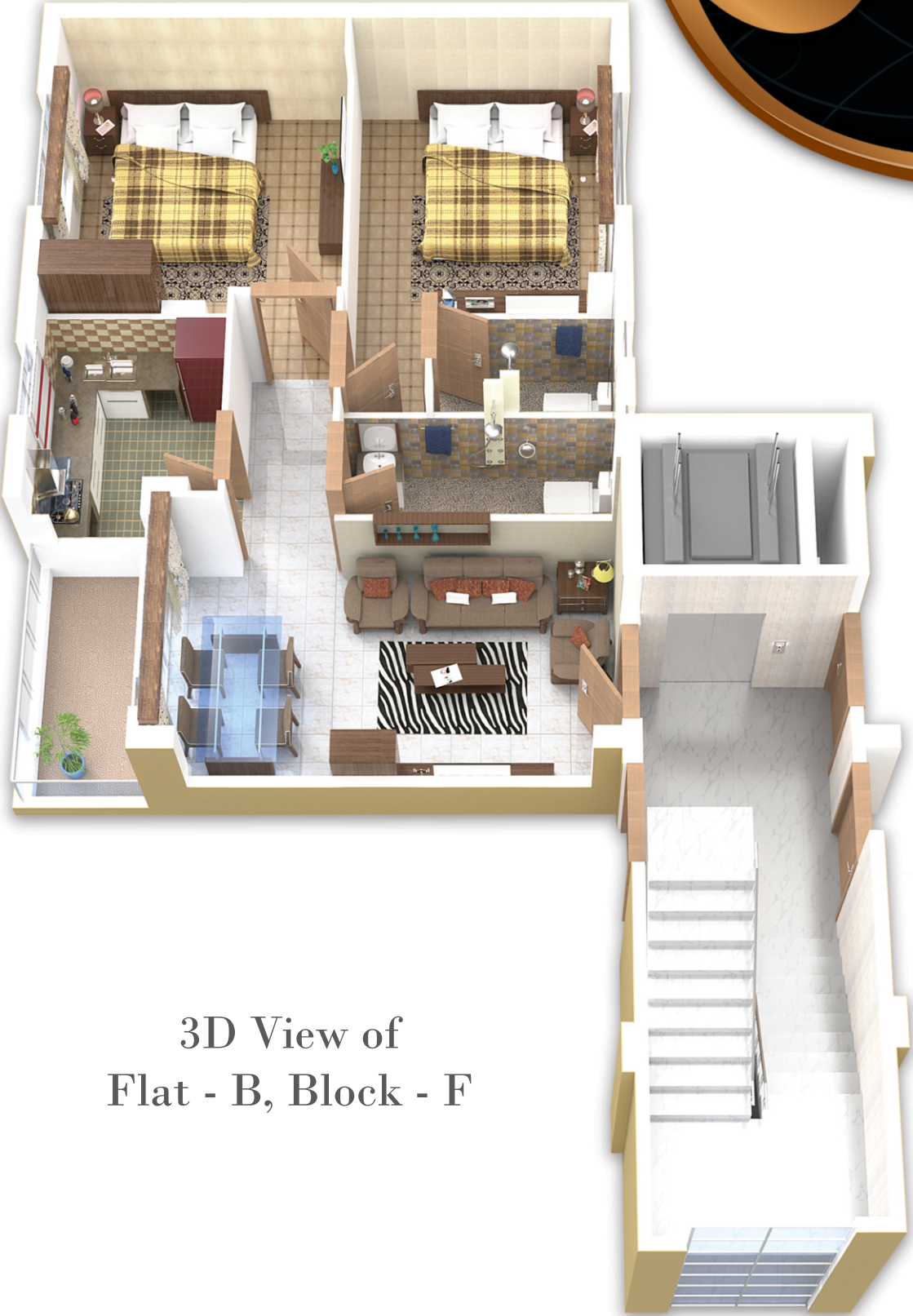


Flat	Type	Area
A	3 BHK	1170 sq. ft
B	2 BHK	927 sq. ft
C	3 BHK	1174 sq. ft
D	3 BHK	1170 sq. ft

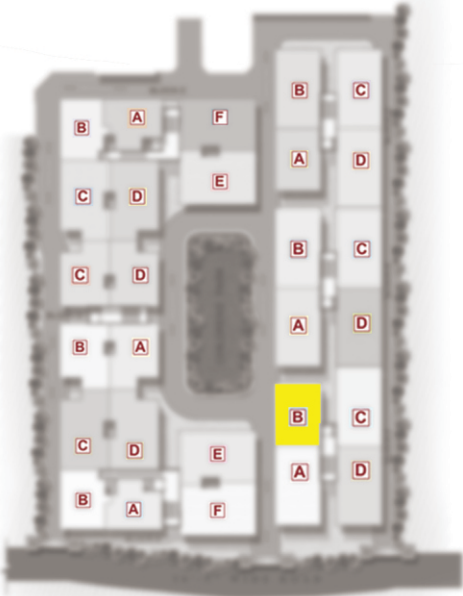




3D Plan



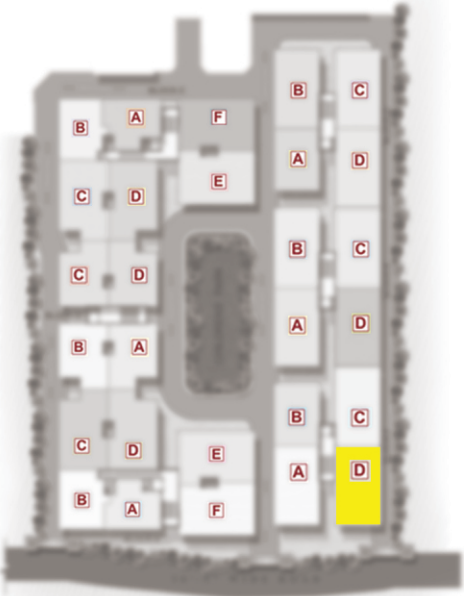
3D View of
Flat - B, Block - F



Birds Eye View



3D View of
Flat - D, Block - F



Birds Eye View





Gymnasium



Decorated Garden



Indoor Games Room



CCTV Service



Swimming Pool



Yoga Deck

Amenities

- Elegant designed main gate with security room & surveillance system
- Well planned parking area*
- Well designed recreation area
- DG Set for 24 Hr power backup for all area*
- Decorated ground floor lobby
- Video surveillance system*
- Intercom*
- Club & recreation
- Children play area
- Fully AC community hall
- Indoor games room
- Swimming pool
- Gym room
- Garden
- Yoga deck

*Condition Applied



Specification

- Structure : Pile foundation for durability & stability RCC frame structure
- Wall Finish :
 - Internal Wall – Finished with POP
 - External Wall – Blending with weather shield paints & decorative finish
- Flooring : Living, dining & all bedrooms quality vitrified 2ft x 2ft tiles
- Kitchen :
 - Granite counter with stainless steel sink.
 - Glazed tiles upto 2ft above the working platform.
 - Anti skid ceramic tiles
- Toilets :
 - Anti skid ceramic tiles
 - Ceramic tiles up to 5 feet
 - Elegant CP fittings & sanitary fittings
- Windows : Anodized aluminium window
- Door :
 - Good quality flush doors in all rooms*
 - Main door with night latch & magic eye
- Electrical :
 - Provision of split AC units in all room*
 - Sufficient electrical points in living rooms & telephone socket provision
 - Washing machine point
 - Modular switches
 - Intercom system
- Staircase and lobby : Specious stair case finished with marble